

# Leading the way in connected transport

Nomad Digital is a world leading provider of passenger, fleet management and monitoring solutions to the transport industry

We offer a broad solutions portfolio to both transport operators and builders that facilitates a significantly enhanced passenger experience with seamless connectivity, real-time journey information and on-board entertainment. Improved fleet availability and operational efficiencies can also be achieved with our real-time monitoring solutions as well as AI and machine learning expertise providing key data insights for operations and maintenance.

## What makes us unique?



### OUR EXPERTS

- Teams with engineering, digital & technical expertise
- Combined 1000+ years rail experience
- 24-hour service desk



### CUTTING EDGE, FUTURE PROOFED TECHNOLOGY

A comprehensive portfolio of connectivity & digital rail solutions



### DIFFERENTIATED SERVICE & PROPOSITION

- Transport & ICT skills and technical know-how
- Solving customer challenges
- Turnkey & scalable solutions to meet evolving requirements
- Customer centric lifecycle approach

## Our integrated & scalable solutions include:



**Proven Passenger WiFi** enabling seamless connectivity with the internet and on-board infotainment.



**On Board Information System for Passengers (OBIS)** for live journey, multi-media and passenger information, our Web Portal simplifies the creation of custom portals, on-board services and entertainment.



**Remote Online Condition Monitoring (ROCM)** providing in-depth and real-time information on the performance of crucial equipment and components on-board, partnered with diagnostic alerts.

# A History of Innovation



We are committed to innovation & continued development of industry leading solutions. This philosophy has resulted in Nomad Digital delivering many of the world firsts in transport fleet connectivity:

## World's first:

- seamless tunnel connectivity for a passenger WiFi
- on-board movie-on-demand service to passengers using WiFi
- terrestrially streamed live broadcast TV for passengers
- rail adapted virtualisation applications on train

Ground-breaking high availability trackside network solution

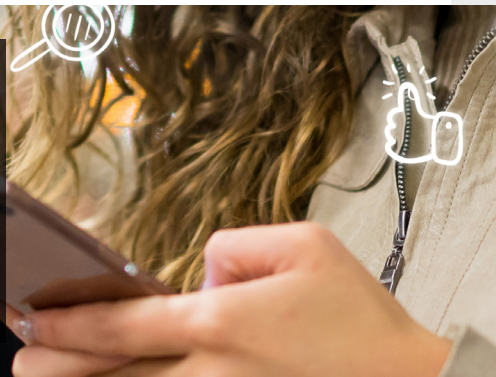
Real-time automated integrated passenger information Web Portal

Hybrid offline & online mapping system using Google Maps

Ground-breaking internet acceleration technology

## Connecting everything for the intelligent journey

Our offering includes a product portfolio that helps improve passenger experience as well as efficiency of technology, both operating on one common platform.



### CONNECT

Enabling high bandwidth & reliable connectivity to the vehicle that passengers can use via multiple channels.

- Nomad Connect
- 5G
- Trackside Networks
- Onboard Data Centre



### PROTECT

The provision of services & tools to aid the protection of your passengers and your brand, from a potential Cybersecurity attack across your vehicle ecosystem.

- Security-as-a-Service



### INSIGHT

Allowing vehicle, operations & maintenance staff and other stakeholders access to real-time data, improving customer service, operations, capacity, availability and reducing costs.

- Historical Reporting using Fleetview
- Real Time Management using NMS (Network Management System)
- Rail Maintenance using ROCM (Remote Online Condition Monitoring)
- AI & Machine Learning Readiness
- Mobile App: Nomad Navigator



### ENGAGE

Providing high levels of passenger satisfaction through our Web Portal, with access to Rich Media content and real time journey information.

- Engage Portal
- OBIS (On Board Information System)

Solutions on more than 100 fleets - with over 10,000 rolling stock units



Utilising more than 38,000 passenger information screens



Carrying more than 7 million WiFi sessions per month



Serving infotainment to circa 1.7 billion passengers each year